



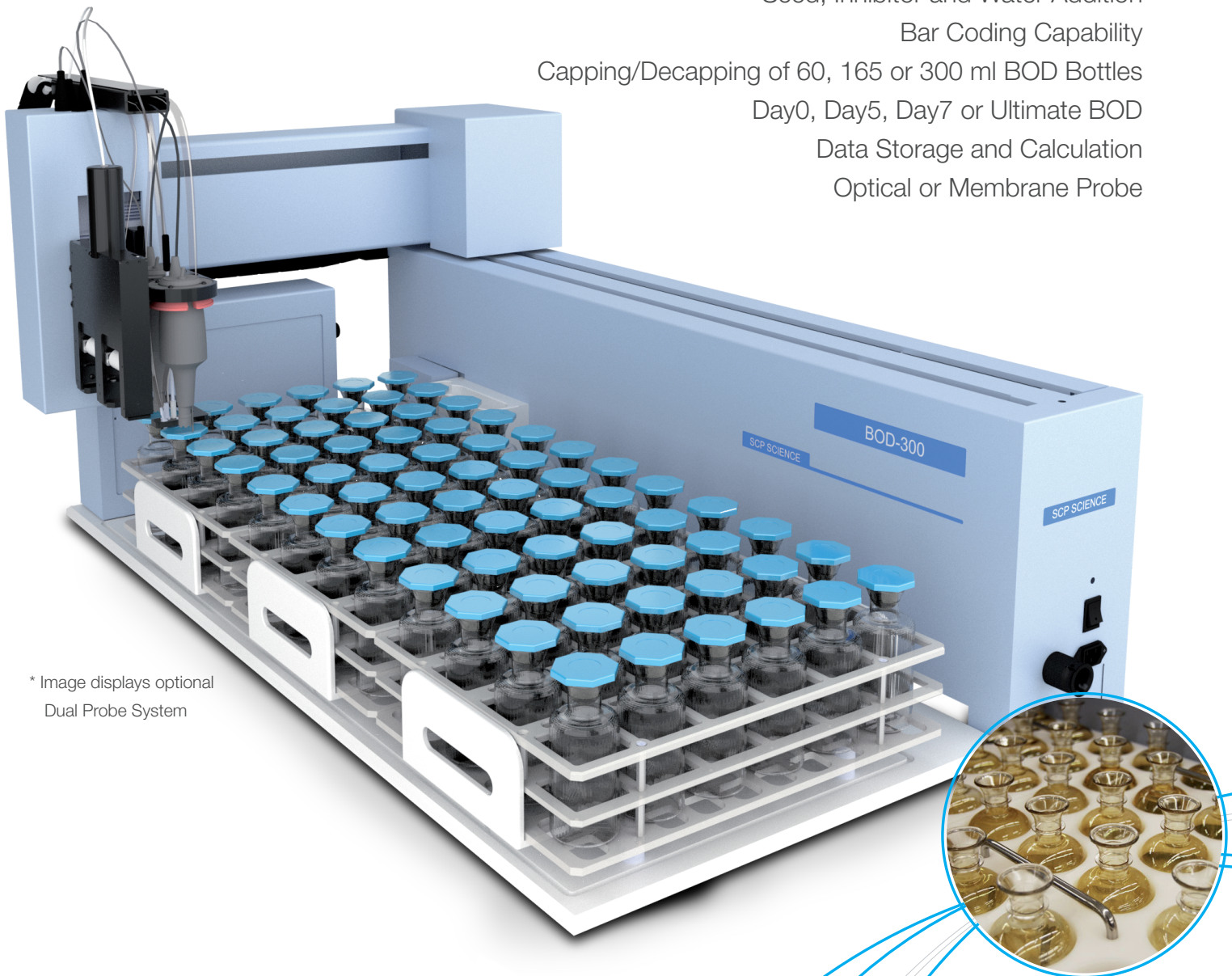
| **BOD-300**

# Environmental Analyzer

*Easy*PREP

# BOD-300

BOD / cBOD Analysis  
Seed, Inhibitor and Water Addition  
Bar Coding Capability  
Capping/Decapping of 60, 165 or 300 ml BOD Bottles  
Day0, Day5, Day7 or Ultimate BOD  
Data Storage and Calculation  
Optical or Membrane Probe



\* Image displays optional  
Dual Probe System

**ENVIRONMENTAL  
TESTING**  
made  
*Easy*PREP

**SCP SCIENCE**  
[www.scpscience.com](http://www.scpscience.com)

# Overview

The **EasyPREP** portfolio provides environmental testing laboratories with the technologies required to comply with environmental water legislation through automated, unattended, environmental analyzers.

The **EasyPREP** BOD-300 provides users with the capability to conduct BOD and cBOD analysis. Analyze cBOD in conjunction with BOD to verify if non-compliant BOD results are due to nitrification. Obtain results more reflective of real effluent quality than when under nitrifying conditions.

**EasyPREP** BOD-300 is an environmental analyzer for the sample preparation and analysis for Biochemical Oxygen Demand (BOD). With three liquid-handling peristaltic pumps, the **EasyPREP** BOD-300 adds seed and nitrification inhibitor as well as dilution water to perform sample dilutions. The low maintenance dissolved oxygen (DO) probe with either optical or membrane technology incorporates a blade stirrer, keeping the sample homogeneous and accelerating probe equilibration for DO measurement. The software manages sample's initial to final DO measurement and BOD calculations.

## THE BOD-300 AUTOMATES BOD AND CBOD ANALYSIS FOR STATE, MUNICIPAL, AND COMMERCIAL TESTING LABORATORIES

- Improve laboratory productivity by assigning personnel to value-added tasks instead of repetitive manual BOD measurements.
- Ensure that your laboratory complies to accuracy and precision requirements.
- Ensure repeatability. Results are only reflective of sample variations.
- Track and reference detailed records of results.

Biochemical oxygen demand (BOD), measures oxygen depletion which represents the breakdown of organic material by microorganisms. Carbonaceous BOD (cBOD), measures oxygen depletion from the breakdown of organic material by microorganisms in which the contribution from nitrogenous bacteria has been suppressed.

# Features

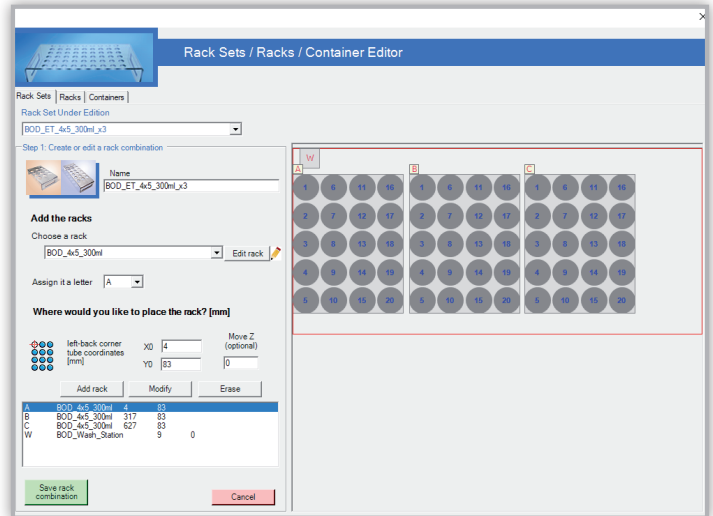
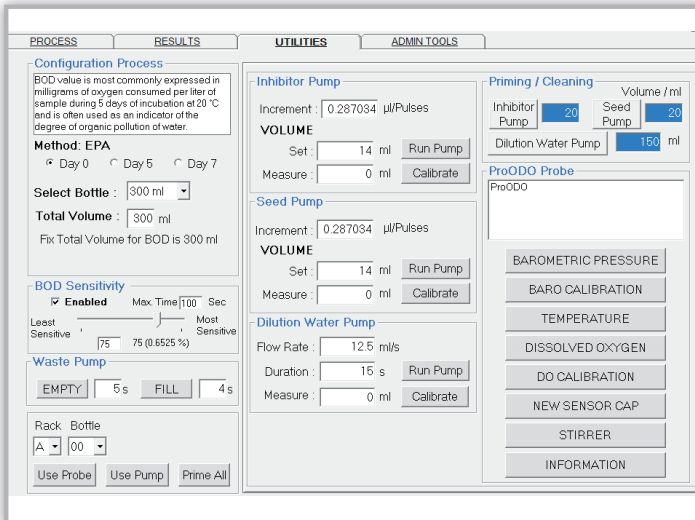
- Automatic single or dual capping/decapping of BOD bottles.
- Universal platform accommodates a variety of racks for 60, 165 and 300 ml bottles.
- Barcode reader option provides sample tracking throughout the entire process.
- Optimize laboratory management with Day0, Day5, Day7 or Ultimate BOD (which is the total oxygen consumed when a biochemical reaction has been completed).
- Automatic dispensing of liquids and quick measurement for Day0.
- Integrated blade stirrer for homogenization and optimal stabilization time.
- YSI Optical or Membrane probe, available in single or dual configurations.
- Automatic rinsing between samples preventing cross contamination.
- Pumps for each probe; for dispensing of dilution water, seed and inhibitor.
- Prime tubing with the click of a button.

COMPLIANT WITH  
LABORATORY STANDARDS:

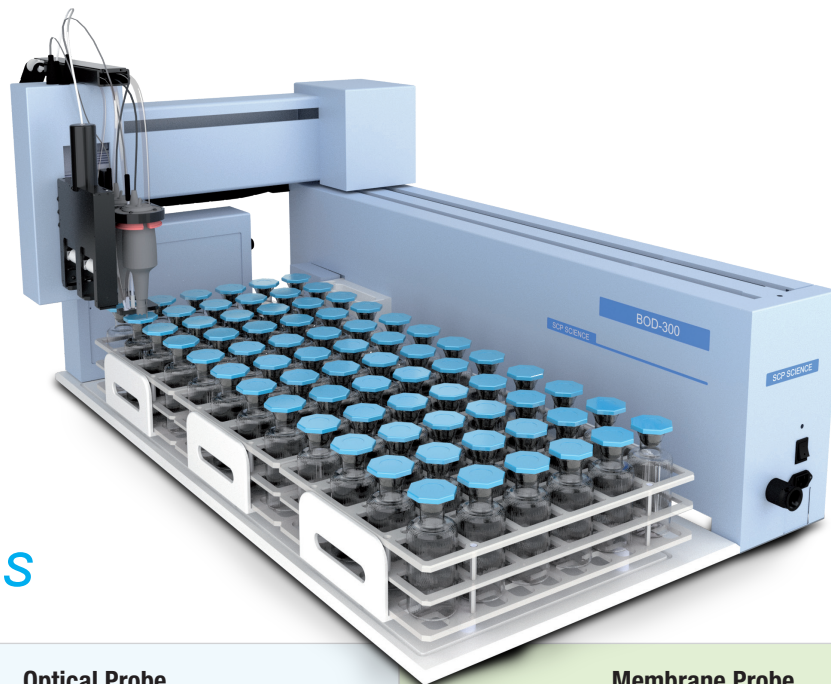
ISO 5815-1 | EN-1899-1 | EN-1899-2 | EN-5814 (2012) | EPA 405.1 | SM5210B

# Software

- Set 5-day, 7-day or n-days incubation period.
- Rack-specific time tracking of incubation period.
- Data exportable to a LIMS in a compatible .csv format.
- Automatic flagging of "out-of-range" results by applying pre-defined criteria for blanks, seed controls and standards.
- Automatic barometric pressure compensation.
- Automatic temperature compensation.
- Seed and inhibitor volume additions are user definable.
- Easy and quick probe calibration function.
- Date and time stamp.



EasyPREP BOD-300 Dimensions	
Length	45.87" (116.5 cm)
Depth	25.60" (65 cm)
Height	25.20" (64 cm)



## Probe Options

	Optical Probe	Membrane Probe
<b>Range:</b>	0-50 mg/L	0-50 mg/L
<b>Accuracy:</b>	0 to 20: $\pm 0.1$ mg/L or $\pm 1\%$ reading, whichever greater	0 to 20: $\pm 0.1$ mg/L or $\pm 2\%$ reading, whichever greater
<b>Resolution:</b>	or 0.1 mg/L (auto-scaling)	0.01 mg/L
<b>Response time:</b>	T90=22 seconds with stirring	T90=30 seconds with stirring

# BOD-300 *Ordering Information*

## 1. SELECT INSTRUMENT

Description	Catalog No.
BOD-300 110V/230V with Optical Probe	010-420-007
BOD-300 110V/230V with Membrane Probe	010-420-008

## 2. SELECT DUAL PROBE OPTION PLUS EXTRA PROBE

Description	Catalog No.
BOD YSI Optical Probe	010-420-030
BOD YSI Membrane Probe	010-420-031
BOD Dual Optical Probe	010-420-009
BOD Dual Membrane Probe	010-420-011
BOD-300 Dual Capping/Decapping	010-420-016
BOD-300 Single Capping/Decapping	010-420-012

## 3. SELECT RACKS

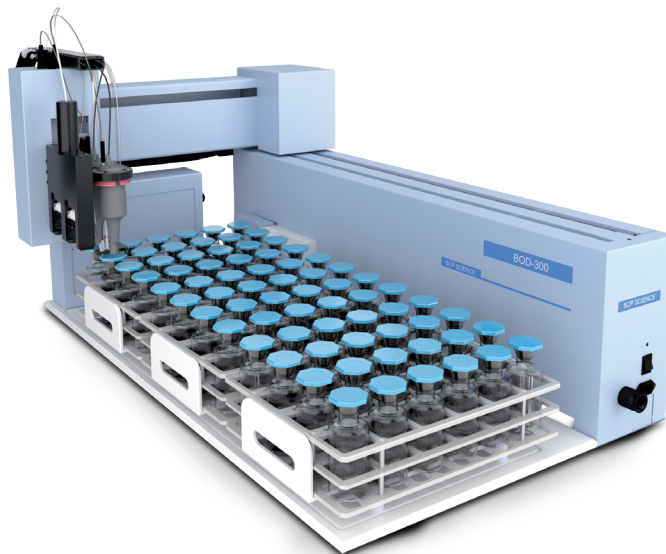
Description	Catalog No.
Rack, BOD-300 300 ml x 20 position Disposable Bottles, rack made of polypropylene	010-420-029
Rack, BOD Dual Probe, 300 ml x 20 position Glass Bottles, rack made of polypropylene	010-420-028
Rack, BOD Dual Probe 165 ml x 24 position Bottle, rack made of polypropylene	010-420-032
Rack, BOD Dual Probe 60 ml x24 position Bottle, rack made of polypropylene	010-420-033

## 4. SELECT CONTROLLER

Description	Catalog No.
Controller with French Operating system	010-400-007
Controller with English Operating system	010-400-008

## 5. SELECT ACCESSORIES

Description	Catalog No.
Pump Head only Seed Pump	010-420-023
Pump Head only for Dilution Pump	010-420-021
Stir Shaft for YSI Probe	010-420-034
BOD Bottles, 165 ml, box/24 uses 010-420-058 bottle caps	010-420-056
BOD bottles caps PE for automation 300 glass/plastic, 165 ml and 60 ml glass (pk/100)	010-420-020
BOD Bottle Cap 165 ml BOD Bottle (pk/24)	010-420-058



Contact your Sales Representative, local Distributor, or one of our regional offices below:

CANADA	USA	FRANCE	GERMANY	UK
Phone: +1 (800) 361-6820 Fax: +1 (800) 253-5549	Phone: +1 (800) 361-6820 Fax: +1 (800) 253-5549	Phone: +33 (0) 1 69 18 71 17 Fax: +33 (0) 1 60 92 05 67	Phone: +49 (0) 8342-89560-61 Fax: +49 (0) 8342-89560-69	Phone: +44 (0) 7561-7028-90

**CORPORATE:** Phone: +1 (514) 457-0701 | Fax: +1 (514) 457-4499 | [www.scpsscience.com](http://www.scpsscience.com) | [sales@scpsscience.com](mailto:sales@scpsscience.com)

